

5-Speed Transmission

Index

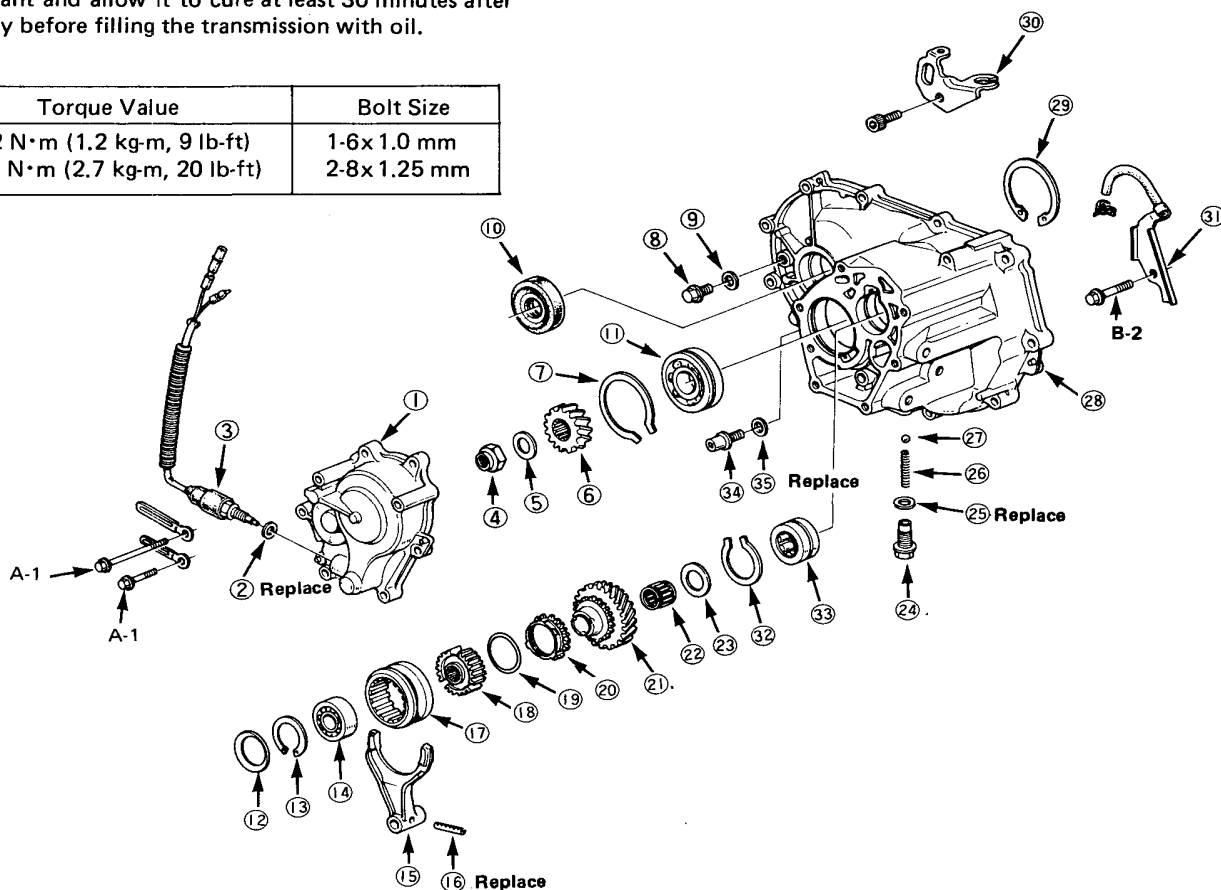
Clean all parts thoroughly in solvent and dry with compressed air.



Lubricate all parts with oil before reassembly.

NOTE: This transmission uses no gaskets between the major housings; use Honda P/N 08740-99986 sealant. Assemble the housings within 20 minutes after applying the sealant and allow it to cure at least 30 minutes after assembly before filling the transmission with oil.

Torque Value	Bolt Size
A-12 N·m (1.2 kg-m, 9 lb-ft)	1-6x 1.0 mm
B-27 N·m (2.7 kg-m, 20 lb-ft)	2-8x 1.25 mm



① 5th GEAR HOUSING

Removal, page 14-7

② 14 mm WASHER

③ BACK-UP LIGHT SWITCH

Inspection, page 14-38

④ 25 N·m (2.5 kg-m, 18 lb-ft)

COUNTERSHAFT LOCKNUT

110 N·m (11.0 kg-m, 80 lb-ft)

⑤ SPRING WASHER

⑥ COUNTERSHAFT 5th GEAR

⑦ 65 mm SNAP RING

⑧ OIL FILLER BOLT

45 N·m (4.5 kg-m, 33 lb-ft)

⑨ SEALING WASHER

⑩ SEAL

Removal, page 14-19

Installation, page 14-35

⑪ COUNTERSHAFT BALL BEARING

⑫ 52 mm SPRING WASHER

⑬ SNAP RING

Removal, page 14-7

Installation, page 14-7

⑭ MAINSHAFT BALL BEARING

⑮ 5th GEAR SHIFT FORK

⑯ SPRING PIN

Disassembly, page 14-6

Assembly, page 14-34

⑰ 5th GEAR SYNCHRO SLEEVE

⑱ 5th GEAR SYNCHRO HUB

⑲ SYNCHRO SPRING

⑳ 5th GEAR SYNCHRO RING

㉑ 5th GEAR

㉒ NEEDLE BEARING

㉓ THRUST WASHER

㉔ DETENT BALL RETAINER SCREW

22 N·m (2.2 kg-m, 16 lb-ft)

㉕ SEALING WASHER

㉖ DETENT SPRING

㉗ DETENT BALL

㉘ TRANSMISSION HOUSING

㉙ 72 mm SNAP RING

㉚ CLUTCH CABLE BRACKET

㉛ BREATHER TUBE ASSEMBLY

㉜ 45 mm SNAP RING

㉝ NEEDLE BEARING

㉞ OIL DRAIN PLUG

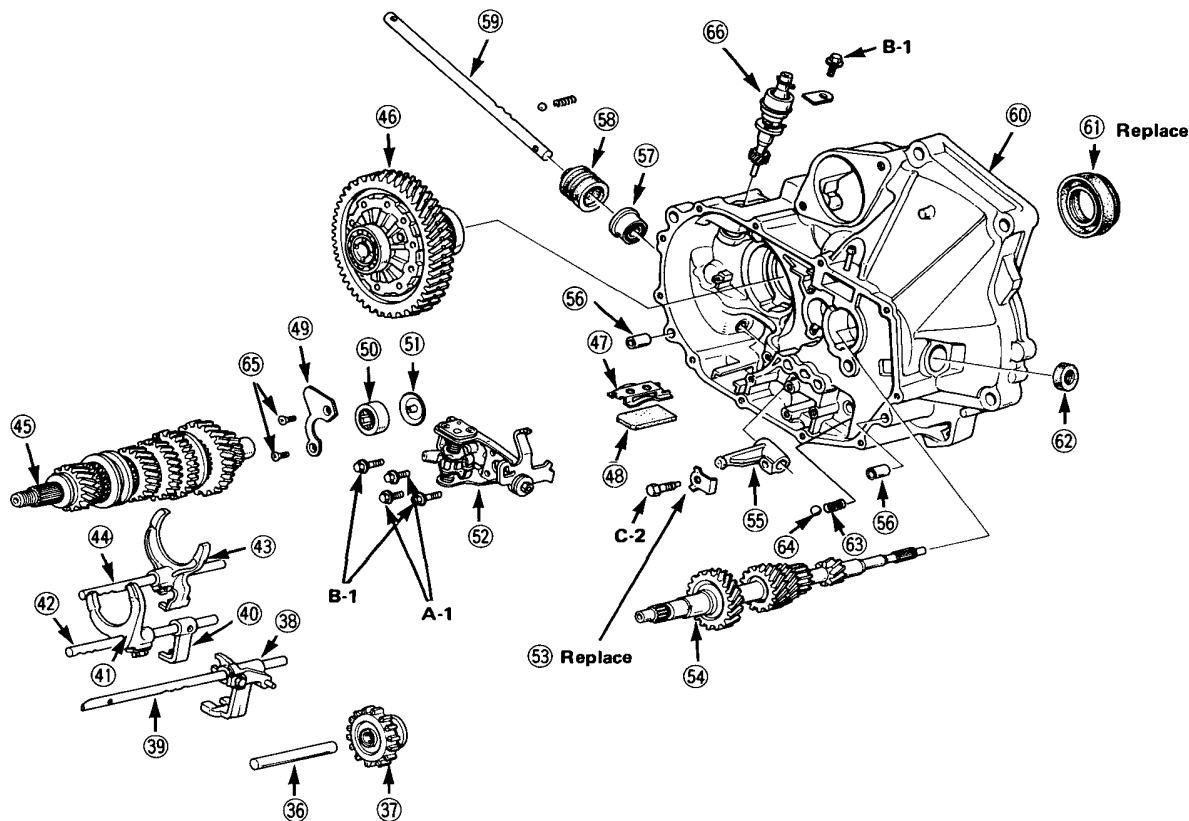
40 N·m (4.0 kg-m, 29 lb-ft)

㉟ SEALING WASHER



NOTE: Always clean the magnet (48) whenever the transmission housing is disassembled.

Torque Value	Bolt Size
A-12 N·m (1.2 kg-m, 9 lb-ft)	1-6x 1.0 mm
B-14 N·m (1.4 kg-m, 10 lb-ft)	2-8x 1.25 mm
C-24 N·m (2.4 kg-m, 17 lb-ft)	



- (36) REVERSE IDLER GEAR SHAFT
- (37) REVERSE IDLER GEAR
Removal, page 14-10
Installation, page 14-31
- (38) REVERSE SHIFT GUIDE
- (39) REVERSE SHIFT SHAFT
- (40) 3rd GEAR SHAFT GUIDE
- (41) 3rd GEAR SHIFT FORK
- (42) 3rd GEAR FORK SHAFT
- (43) 1st GEAR SHIFT FORK
- (44) 1st GEAR FORK SHAFT
- (45) COUNTERSHAFT ASSEMBLY
Disassembly, page 14-11
Measurement, page 14-21
Inspection, page 14-15
- (46) DIFFERENTIAL
Removal, page 14-19
Dis/assembly, Section 17
- (47) HOLD-DOWN PLATE

- (48) MAGNET
- (49) BEARING RETAINER PLATE
- (50) NEEDLE BEARING
- (51) OIL BARRIER PLATE
- (52) SHIFT ARM HOLDER
Removal, page 14-11
Disassembly, page 14-26
Assembly, page 14-26
- (53) LOCK PLATE
- (54) MAINSHAFT
Removal, page 14-11
Measurement, page 14-18
Inspection, page 14-12
- (55) GEAR SHIFT ARM
- (56) DOWEL PIN
- (57) SEAL
- (58) BOOT
- (59) GEAR SHIFT ROD
- (60) CLUTCH HOUSING

- (61) SEAL
- (62) DUST SEAL
- (63) DETENT SPRING
- (64) DETENT BALL
- (65) DETENT FLAT SCREW
- (66) SPEEDOMETER DRIVEN GEAR